

NOTES

AT ALL FIXED POINTS OF SUPPORT, NUTS FOR ANCHOR BOLTS ARE TO BE TIGHTENED FINGER TIGHT AND THEN BACKED OFF 1/2 TURN, THE THREAD OF THE NUT AND BOLT SHALL THEN BE BURIED WITH A SHARP POINTED TOOL.

THE 51mm Ø PIPE SLEEVE SHALL BE CUT FROM SCHEDULE 40 PVC PLASTIC PIPE, THE PVC PLASTIC PIPE SHALL MEET THE REQUIREMENTS OF ASTM D1785.

STEEL SOLE PLATES, ANCHOR BOLTS, NUTS, AND WASHERS SHALL BE GALVANIZED IN ACCORDANCE WITH THE STANDARD SPECIFICATIONS.

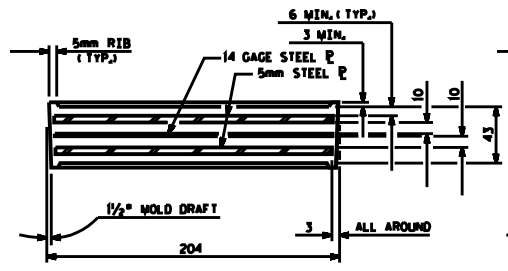
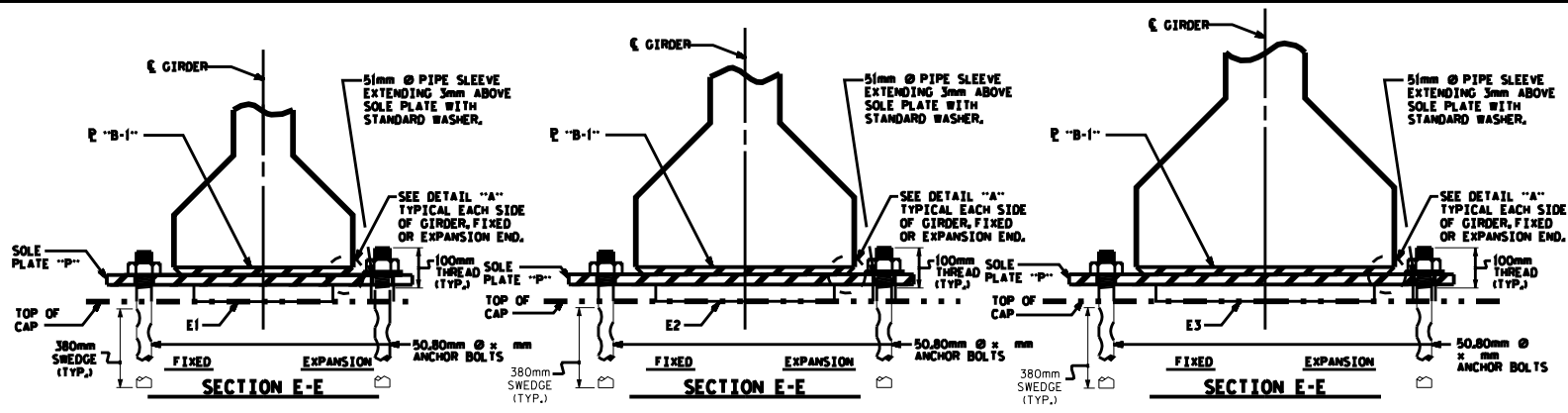
PRIOR TO WELDING, GRIND THE GALVANIZED SURFACE OF THE PORTION OF THE EMBEDDED PLATE AND SOLE PLATE THAT ARE TO BE WELDED, AFTER WELDING, DAMAGED GALVANIZED SURFACES SHALL BE REPAIRED IN ACCORDANCE WITH THE STANDARD SPECIFICATIONS.

WHEN WELDING THE SOLE PLATE TO THE EMBEDDED PLATE IN THE GIRDER, USE TEMPERATURE INDICATING WAX PENS OR OTHER SUITABLE MEANS, TO ENSURE THAT THE TEMPERATURE OF THE SOLE PLATE DOES NOT EXCEED 149°C. TEMPERATURES ABOVE THIS MAY DAMAGE THE ELASTOMER.

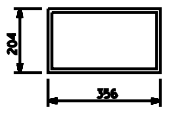
SOLE PLATE "P", BOLTS, NUTS, WASHERS, AND PIPE SLEEVE SHALL BE INCLUDED IN THE PAY ITEM FOR PRESTRESSED CONCRETE GIRDERS.

ANCHOR BOLTS SHALL MEET THE REQUIREMENTS OF ASTM A449. NUTS SHALL MEET THE REQUIREMENTS OF AASHTO M291M-12 OR AASHTO M292M-24. WASHERS SHALL MEET THE REQUIREMENTS OF AASHTO M293M. SHOP DRAWINGS ARE NOT REQUIRED FOR ANCHOR BOLTS, NUTS AND WASHERS. SHOP INSPECTION IS REQUIRED.

ALL SURFACES OF BEARING PLATES SHALL BE SMOOTH AND STRAIGHT.



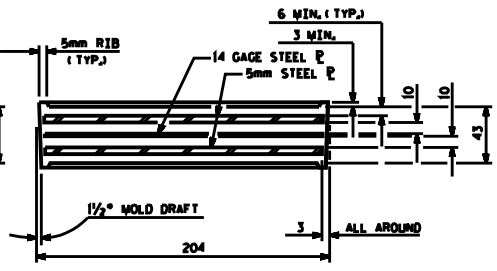
TYPICAL SECTION OF ELASTOMERIC BEARINGS



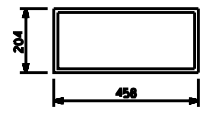
E1 (_REQ'D)

PLAN VIEW OF ELASTOMERIC BEARING

TYPE II



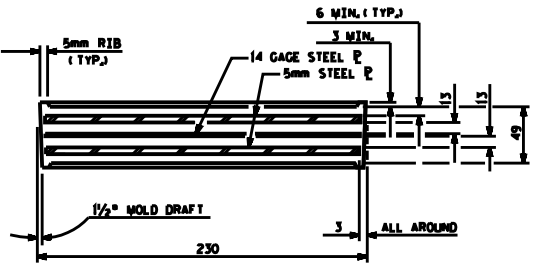
TYPICAL SECTION OF ELASTOMERIC BEARINGS



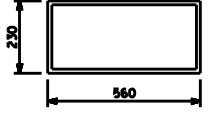
E2 (_REQ'D)

PLAN VIEW OF ELASTOMERIC BEARING

TYPE III



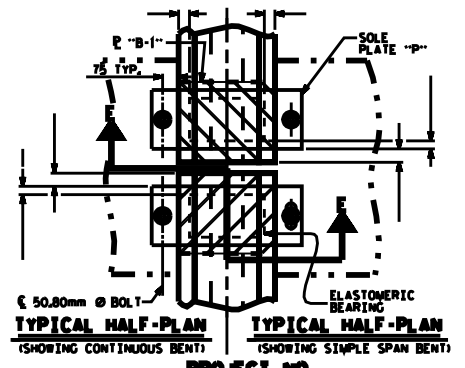
TYPICAL SECTION OF ELASTOMERIC BEARINGS



E3 (_REQ'D)

PLAN VIEW OF ELASTOMERIC BEARING

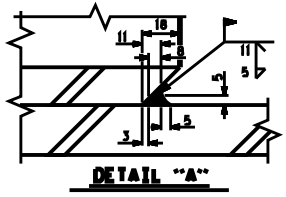
TYPE IV



PROJECT NO. _____ COUNTY _____
STATION: _____

— LOAD RATINGS —

	MAX. D.L. + L.L.
914mm PCG - TYPE II	366 kN
1143mm PCG - TYPE III	512 kN
1372mm PCG - TYPE IV	611 kN



DETAIL "A"

ASSEMBLED BY :	DATE :
CHECKED BY :	DATE :
DRAWN BY : M.J.H. 8/89	REV. 10/17/00
CHECKED BY : C.R.K. 8/89	REV. 7/10/01
	REV. 5/1/08

SOLE PLATE DETAILS ("P")

STATE OF NORTH CAROLINA
DEPARTMENT OF TRANSPORTATION
SECTION
**STANDARD
ELASTOMERIC BEARING
DETAILS**
PRESTRESSED CONCRETE GIRDER
SUPERSTRUCTURE

REVISIONS				SHEET NO.
NO.	DATE	BY	DATE	SHEET